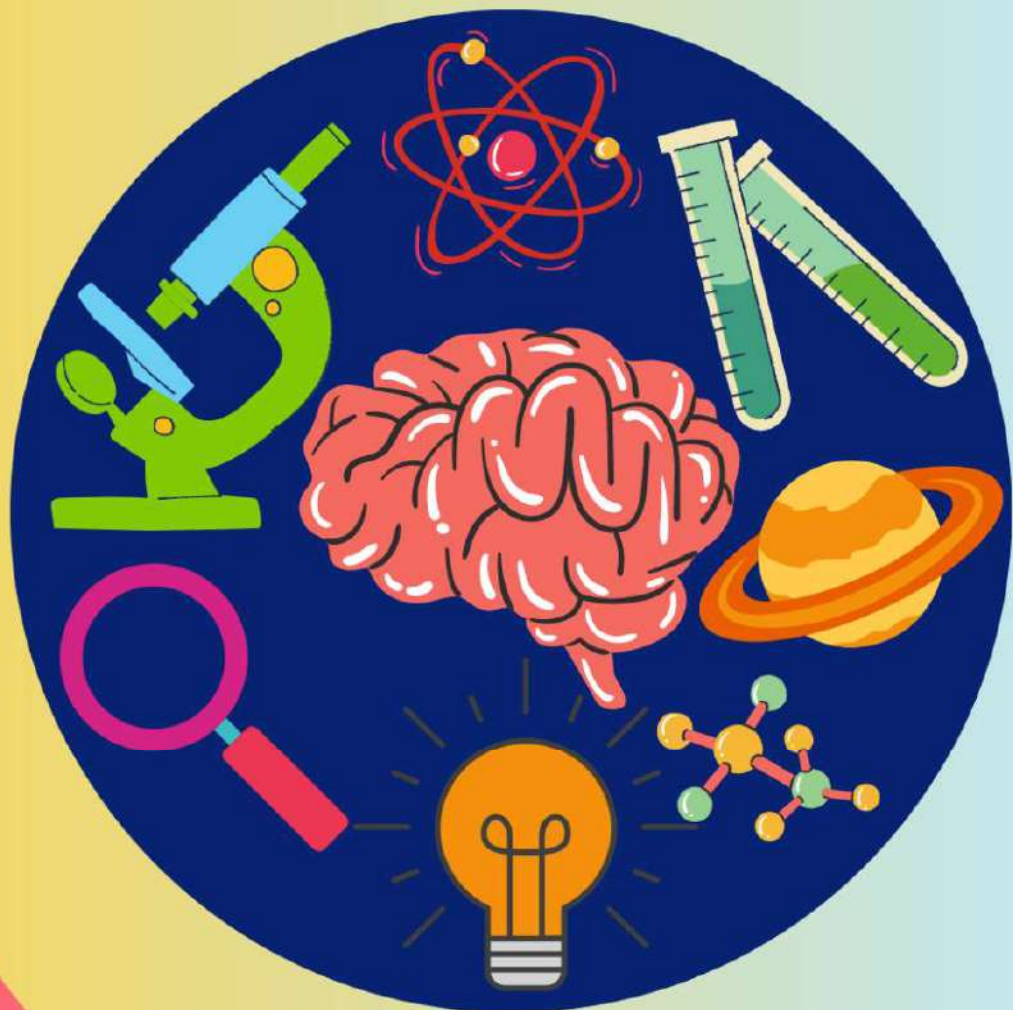


SCIENCE WORKBOOK

2

For the preparation of National
& International Olympiads



- Chapter-wise practice exercises
- Previous year paper

Science Olympiad

Exams Preparation Book

CSO | NSO | USO | iOS | NSTSE | HSO

Grade 2



#CRESTInnovator

www.crestolympiads.com

CREST Science Olympiad Workbook for Grade 2

Second Edition

Copyright © 2022 Loyalty Square Analytic Solutions Private Limited (hence, referred to as CREST Olympiads). Printed with the permission of CREST Olympiads. No part of this publication may be reproduced, transmitted, in any form or by any means, electronic, mechanical, photocopying, recording or otherwise, without the prior permission of the copyright holder. Ownership of a Workbook does not give the possessor the Workbook copyright.

Disclaimer: The information in the Workbook is to give you the path to success but it does not guarantee 100% success as the strategy is completely dependent on its execution. And it is based on previous year papers of CSO exam.

Published & Distributed by: Loyalty Square Analytic Solutions Private Limited
Corporate Office: B4 - 1110B, Spaze IT Park, Sector-49, Gurgaon, Haryana-122018, India
Website: <https://www.crestolympiads.com>
Email: info@crestolympiads.com
Contact Number: +91-9818-294-134

ISBN Number: 978-81-957365-6-0

Social Media Accounts



Facebook: <https://www.facebook.com/crestolympiads>

Instagram: <https://www.instagram.com/crestolympiads>

LinkedIn: <https://www.linkedin.com/company/crestolympiads>

Youtube: <https://www.youtube.com/c/CRESTOlympiads>

Twitter: <https://twitter.com/crestolympiads>

Visit www.crestolympiads.com/buy-workbook for buying books online.



Also Available On

amazon Flipkart 

Contents

1. Plants	5
2. Animals	14
3. Human Body.....	24
4. Food.....	33
5. Housing and Clothing	41
6. Our Family.....	51
7. Occupations	56
8. Good Habits and Safety Rules	63
9. Transport and Communication	72
10. Air.....	80
11. Water and Rocks.....	88
12. Earth and Universe.....	98
13. Previous Year Paper (2021-22).....	106
14. Answer Key	114

Preface

We are pleased to launch a thoroughly revised edition of this workbook. We welcome feedback from students, teachers, educators and parents. For improvements in the next edition, please send your suggestions at info@crestolympiads.com.

CREST Olympiads is one of the largest Olympiad Exams with students from more than 25 countries. The objective of these exams is to build competitive spirit while evaluating students on conceptual understanding of the concepts.

We strive to provide a superior learning experience, and this workbook is designed to complement the school studies and prepare the students for various competitive exams including the CREST Olympiads. This workbook provides a crisp summary of the topics followed by the practice questions. These questions encourage the students to think analytically, to be creative and to come up with solutions of their own. There's a previous year paper given at the end of this workbook for the students to attempt after completing the syllabus. This paper should be attempted in 1 hour to get an assessment of the student's preparation for the final exam.

Publishers

Chapter 1

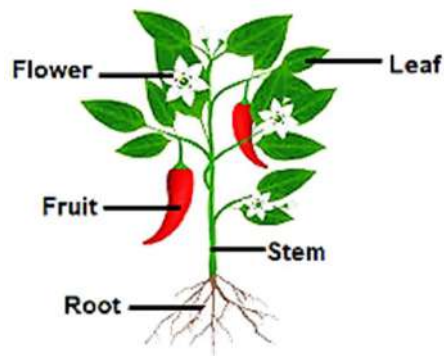
Plants

Plants

Plants make our surroundings green. They are living things. They need air, water, soil, and sunlight to grow.

Parts of a Plant and Their Functions:

1. **Roots** – Roots are located under the soil. It fixes the plant to the ground firmly and helps the plants in absorbing water and minerals from the soil.
2. **Stem** – Stem is the main body of a plant. It supports the leaves. It transports water and minerals from the roots to the other parts of the plant. It also transports the food prepared by the leaves to other parts of the plants. Stem bears branches, leaves, buds, flowers, and fruits.
3. **Leaf** – Leaves are attached to the stem of the plant. They are green and flat. Leaves prepare food for the plant in the presence of sunlight, water from roots, carbon dioxide from air.
4. **Flower** – Flowers are the most beautiful part of a plant. They grow from buds, and they produce fruits.
5. **Fruit** – Fruits are the sweet and the juicy part of a plant. They are fleshy and sometimes contain seeds. The seeds grow into new plants.



Parts of a Plant that we eat



Almonds



Peas



Peanut

Seeds we eat



Ginger



Potato

Stems as vegetables



Beetroot



Radish



Carrot

Roots as vegetables



Broccoli



Cauliflower

Flowers as food



Spinach



Lettuce



Cabbage

Leaves as food

Types of Plants

Big Plants – Trees

- They are big, tall, and strong plants.
- They have hard, brown, and woody stem called trunk and has many branches.
- Trees live for many years.
- They have strong stem, and have big roots.
- Trees give us shade, fruits, and wood.



Banyan



Coconut

Small Plants

- They are smaller than trees.
- Their stems are thinner and weaker.
- They need less space to grow.
- Herbs, shrubs, climbers, and creepers are small plants.

Herbs: Herbs are small and weak plants. Their stems and branches are soft and green. Many vegetables and spices are herbs. Herbs live only for a few months.



Grass

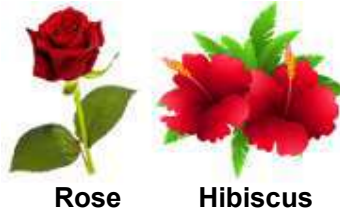


Mint

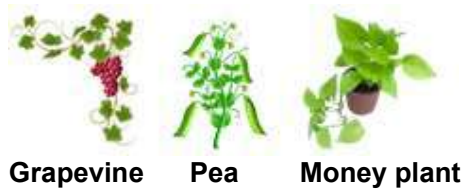


Wheat

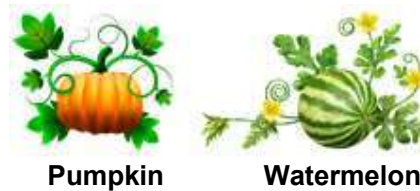
Shrubs: Shrubs are medium-sized plants. These are smaller than trees and have strong and woody stems with many branches. They are also known as bushes as they grow close to the ground. Shrubs generally live only for few years.



Climbers: Climbers are plants that have weak stems and need support to grow upright. They generally use a support of a stick, a wall, or other plants to grow along with them.

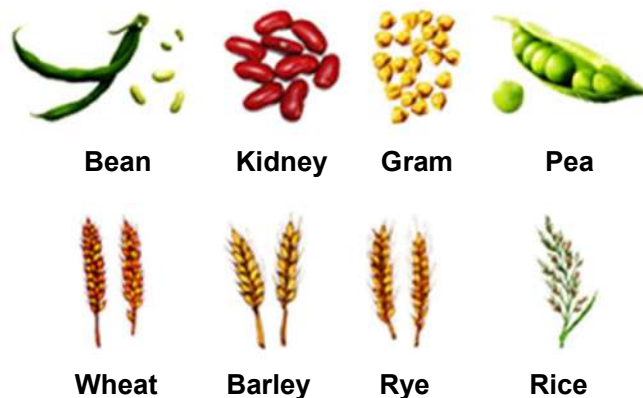


Creepers: Creepers are the plants that have weak and green stems with thin branches. They grow along the ground. They generally bear big and heavy fruits.



Things We Get from Plants:

- We get food from plants in the form of cereals and pulses.



- Plants give us various spices that add flavour to food.



Pepper



Clove



Cumin



Cardamom

- Oil giving plants



Castor



Sunflower



Mustard



Coconut

- Coffee, tea, and sugar



Coffee plant



Tea plant



Sugarcane

- Rubber plant gives us eraser and tyres.



Rubber plant



Eraser



Tyre

- Plants give us fibres used for making clothes.



Cotton plant

Practice Questions

1. Given below is the list of a few items. How many of these can be obtained from plants?

Cheese	Oil	Medicines	Timber	Butter
Rubber	Perfume	Gum	Honey	Yogurt

- a. 5
c. 6
2. Which of the following is NOT a plant?



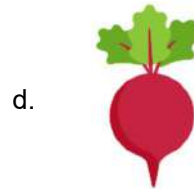
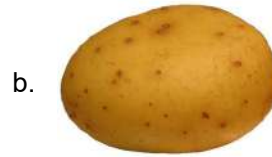
3. Which of the following is NOT the correct pair?

- a. Herb – Soft stem
c. Shrub – Woody stem
- b. Tree – Weak stem
d. Climber – Weak stem
4. Peter visited a grapevine farm and saw the plants growing on sticks. What could be the reason for this?



- a. Grapevines are climbers, and their weak stems need the support of a stick.
b. Grapevines are climbers, and their strong stems need the support of a stick.
c. Grapevines are herbs, and their weak stems need the support of a stick.
d. Grapevines are creepers, and their weak stems need the support of a stick.

5. George had the following food items. If he wants to eat a root vegetable, which of the following food item he should select?



6. Unscramble the given letters to get the name of a climber plant:

a. I U P M K P N
c. H A S I P N C

b. O T C O T N
d. P Y E L O N M T A N

7. Identify the plant shown in the picture and fill in the blank:
The plant gives us _____ that is used for making gunny bags and ropes.



a. jute
c. wool

b. cotton
d. linen

8. Select the ODD one out based on the type of stem:







a. Rosemary
c. Coriander

b. Mint
d. Muskmelon

9. Read the statements given below and choose the correct option:
Statement I: Plants totally depend on animals for food.
Statement II: Plants decay and mix with soil to make it fertile.

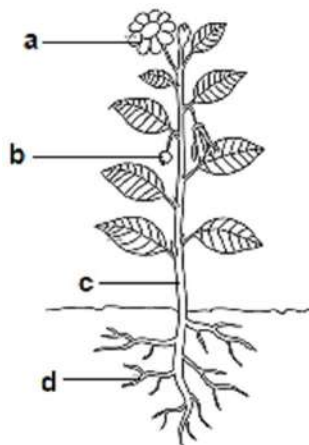
a. Statement I is correct, but statement II is incorrect.
b. Statement I is incorrect, but statement II is correct.
c. Both the statements are incorrect.
d. Both the statements are correct.

10. Look at the given classification table. Select the option that correctly identifies the headings M and N:

M	 Cotton plant	 Rose plant	 Hibiscus plant
N	 Mint	 Basil	 Coriander

- a. M – Herbs, N – Trees
 b. M – Climbers, N – Creepers
 c. M – Shrubs, N – Herbs
 d. M – Climbers, N – Trees
11. Read the clues given below:
 Clue I: I live for many years.
 Clue II: I always stand straight.
 Clue III: I am big and strong.
 Who am I?

- a. Mango tree
 b. Pumpkin plant
 c. Marigold plant
 d. Rose plant
12. Look at the picture of the plant parts below carefully.
 Identify the part that provides support to the shoot and helps in fixing the plant to ground.



- a. Plant part marked - b
 b. Plant part marked - c
 c. Plant part marked - d
 d. Plant part marked - a

13. Which of the following plant yields fibre?

- a. Maize plant
- b. Sunflower plant
- c. Jute plant
- d. Coffee plant

14. Read the statements carefully and state true (T) or False (F):

1. The roots always grow under the soil.
2. Flowers grow from fruits.
3. Seeds usually have a hard covering.
4. Flowering plants produce seeds.

- a. FFTF
- b. TTTT
- c. FTFT
- d. FFFF

15. The picture below shows a lavender flower. What is this flower used for?



- a. It is used in making perfumes.
- b. It is used as a mosquito repellent.
- c. Its seeds are used as a beverage
- d. It is used as a spice.

16. Search the name of the plant part eaten as stem from the wonder box given below.

R	M	S	G	W	T	R	H	P
O	G	A	C	E	L	U	N	I

- a. Ginger
- b. Carrot
- c. Peas
- d. Spinach

17. Which of the following pairs are wrongly classified?

M: Herb – Mint

N: Climber – Cucumber

O: Shrub – Pea plant

P: Creeper – Duckweed

- a. O and P
- b. M and N
- c. N and P
- d. O and M

18. Fill in the blank:

The seeds of a lemon plant are important because _____.

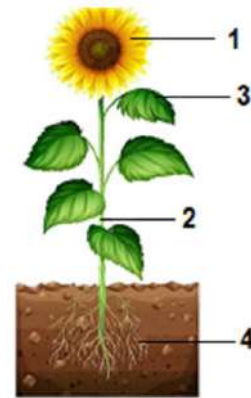
- a. they help the plant to make food
- b. they help the plant to produce new plants
- c. they help the plant to fix the plant to the soil
- d. they help the plant to transport water and food to other plant parts

19. Select the INCORRECT pair from below given options:

- a. Root – Garlic
- b. Stem – Asparagus
- c. Fruit – Lady’s Finger
- d. Leaf – Lettuce

20. Study the given image on various plant parts. Which plant part(s) has/have been INCORRECTLY matched with its function?

Parts	Functions
1.	Contains seeds
2.	Holds the plant firmly to the ground
3.	Prepares food for the plant
4.	Absorbs water for the plant



- a. 1 only
- b. 2 only
- c. Both 1 and 2
- d. Both 3 and 4

CREST International Spell Bee (Summer & Winter)

For Grades 1-8

ENROLL NOW!



Exam Highlights

- ✓ Online proctored Spell Bee exam
- ✓ Focus on evaluating spellings, meanings and pronunciation.
- ✓ Exam Pattern: MCQ type questions + Audio Round (Students need to hear the question & write the spelling of the word asked)
- ✓ Get to attempt 2 Free Practice Tests

#CRESTInnovator

www.crestolympiads.com/registration

+91-98182-94134

